

# Weldable Glass Clamps

## Technical Details

An economic alternative to the traditional glass clamp system.  
Easy to install with no complicated on-site fixing required.

**Glass Thickness:** 8mm, 10mm & 12mm  
**Finish:** Satin 316 Stainless Steel  
**Hole Required in Glass:** 16mm Minimum

Available in 316 Stainless Steel from stock or Mild Steel to special order.

## Product Range



**Short Single**  
80 x 40 x 6mm



**Long Single**  
120mm x 40mm x 6mm



**Straight Double**  
160mm x 40mm x 6mm



**Internal Corner**  
80mm x 80mm x 40mm x 6mm



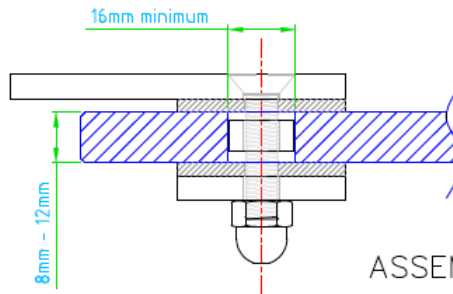
**External Corner**  
80mm x 80mm x 40mm x 6mm

## Clamp Fixing Head Detail

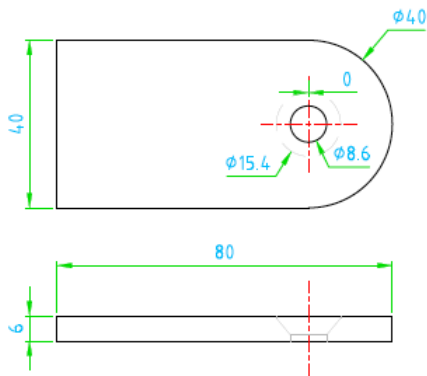
Example below shows Short Single clamp body.

Hole in glass should be 16mm minimum.

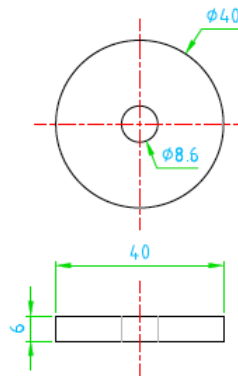
Short Single: From welding end of fitting to glass hole centre = 60mm  
Long Fitting: From welding end of fitting to glass hole centre = 100mm  
Straight Double: From hole centre to hole centre = 120mm  
Internal Corner: From internal corner to glass hole centre = 55mm  
External Corner: From external corner to glass hole centre = 60mm



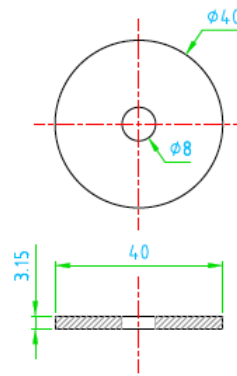
ASSEMBLY DETAILS



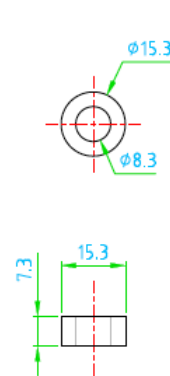
CLAMP BODY



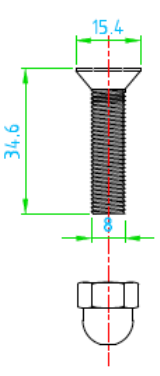
ROUND DISC



RUBBER INLAY



NYLON SPACER



THREAD ASSEMBLY

## Installation Example

