

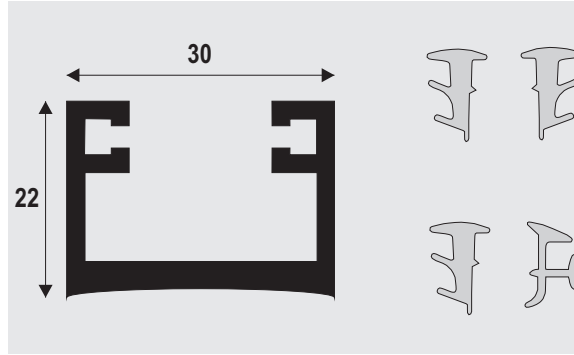
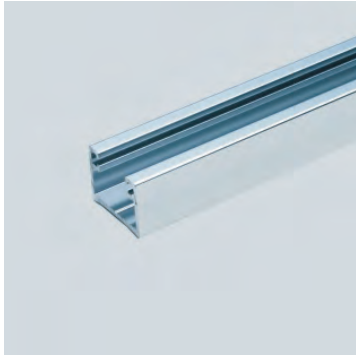
Glazing Channel Range



Our range of Glazing Channels has become one of our most popular products and as a result of that we can now offer a further 2 models.

The GC16A is a larger variant of our popular GC15A and can accommodate glass up to 10mm thick.

The New DG12 is a compact Dry Glaze Channel that comes in a Satin Nickel finish complete with push in gaskets.



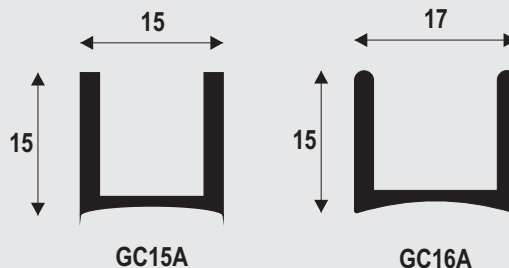
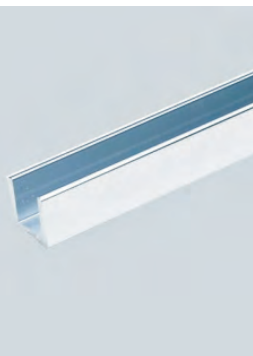
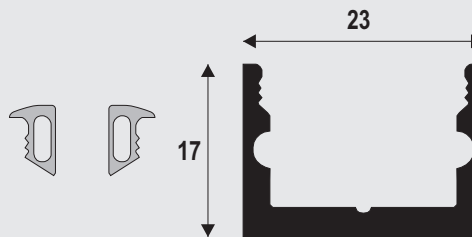
DRY GLAZE CHANNEL DG08
2500mm WITH SEALS
FOR 8mm GLASS
POLISHED ALUMINIUM

DRY GLAZE CHANNEL DG10
2500mm WITH SEALS
FOR 10mm GLASS
POLISHED ALUMINIUM

End Caps Are Available

DRY GLAZE CHANNEL DG12
3000mm WITH SEALS
FOR 12mm GLASS
SATIN NICKEL

End Caps Are Available



CHANNEL GC15A
2500mm Length
POLISHED ALUMINIUM

CHANNEL GC16A
2500mm Length
POLISHED ALUMINIUM

CHANNEL GC14 for 8mm Glass
2200mm Length
POLISHED or SATIN
STAINLESS STEEL.

CHANNEL GC17 for 10 mm Glass
2200mm Length
POLISHED or SATIN
STAINLESS STEEL.

