

Supra and Robustus



System	Supra	Robustus
Maximum door weight - 2 Rollers	25 kg	70 kg
Maximum door weight - 4 Rollers	50 kg	140 kg
Glass thickness	6-8 mm	10-12 mm

High quality sliding door systems for bi-passing doors with many applications including servery hatches, reception counters, cabinets and wardrobes. The tracks and channels are precision Aluminium profiles in a silver anodised finish. The rollers have high load precision ball bearings and nylon tyres. The systems are available from stock and supplied in component form against individual specifications. No notching or drilling of the glass is required. Please contact our sales office for more information.

Ideal for: Reception hatches, cabinets and wardrobes

6-8mm

Supra Standard Track Supra Fully Framed Supra Triple Track

Supra section details

Twin or triple tracks
Fully framed (4 sides) profiles
Vertical side frames complete with Dampers

10-12mm

Robustus Standard Track Robustus with side frame profile

Robustus section details

Twin tracks
Vertical side frames complete with Dampers



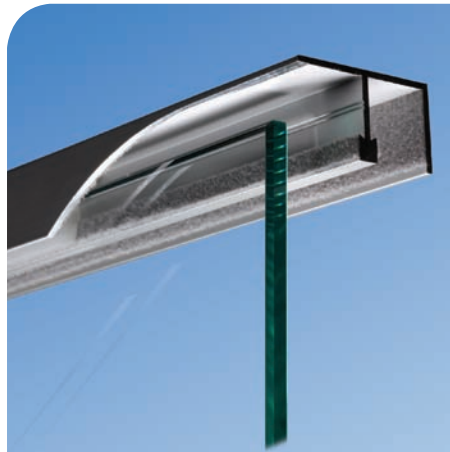


Bottom Tracks

The narrow Supra twin and single tracks are fitted with adhesive tape for fast and easy installation.

The Robustus track must be screwed in position.

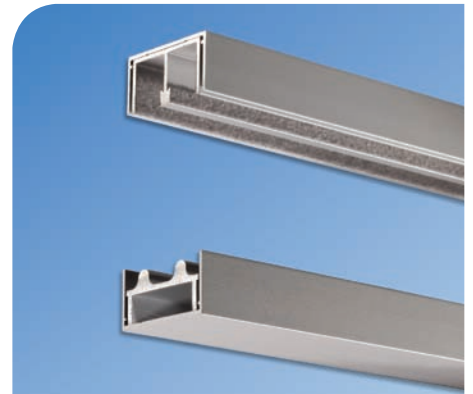
Stock length - 2500mm



Top Tracks

All top tracks have non-wearing flock to the inner faces for quiet running and non-rattle action.

Stock length - 2500mm



Frame Profiles - Horizontal

Both Supra and Robustus are available with a top frame. Only Supra is available with a bottom profile (Twin only)

Stock length - 2500mm



Frame Profiles - Vertical

Both systems offer side frames incorporating a damper/dust seal strip. Vertical brush strips fitted to the glass overlap are also available.

Stock length - 2500mm



Bottom Rail

The roller assemblies are fully enclosed in the door rail and the wheel is enclosed in a stainless steel housing.

Stock length - 2500mm



Bottom Roller

All rollers incorporate fully tested, high load precision bearings with nylon tries.



Locking System

Both systems can be supplied with the patented "Secura" dead bolt lock incorporated into the door rail. The "L" cam of the lock interlocks with the two door rails prevent the doors being forced apart. Top dampers also stop door being lifted off the tracks.



Lock Cylinder

The lock cylinder is supplied separately, either keyed alike or to differ. A "Red" cylinder removal key is also available.



Rail Options

The finger pull, lock keep and lock are all dimensionally coordinated.